

**ALEDOS**

**d-flexx**

**Flexible impact protection**




## Information about the impact angle



The maximum impact loads (joules) specified by us are based on an impact angle of 90°. The smaller the impact angle, the higher the maximum impact load. The expected impact angle therefore plays a significant role in the selection of the most suitable d-flexx impact protection product. An important criteria for the correct decision is whether your forklifts and industrial trucks move parallel or frontally to the barrier. An important decision criterion is whether the forklift trucks used move parallel or frontally to the barrier.

In addition, the total weight of the forklift truck must be taken into account.

The heavier the forklift trucks that are in use, the more massive the impact protection has to be. We are happy to assist you in selecting the right product for your needs.


 **Safety** is a key-topic in every industry. Provided the correct way, it ensures a protected work environment for people and machines. The innovative d-flexx impact protection products made of Polyethylen has many distinct advantages over impact protection products made of steel.

### **Flexibility**

The polyethylene material reliably absorbs the impact energy of forklifts and industrial trucks and releases it once the vehicle leaves the impact site.

### **Cost efficient**

After a collision, environment and vehicles are undamaged, heavily reducing maintenance costs durably.

 **Stainless**  
Unlike steel, polyethylene does not rust and is therefore much more durable.



# INTERNATIONALLY APPROVED

✓ **d-flexx** - tested safety made in Denmark!

**Safety** is a top priority for the creators of d-flexx. For this reason the products of the d-flexx series have been tested.

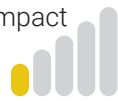


Simple and efficient  
the advantages of **d-flexx** crash protection products

- ✓ Suitable for **outdoor** and **indoor** use
- ✓ **Easy installation** - mounting equipment included
- ✓ **Reduce** repair and maintenance **costs** to a minimum
- ✓ **Versatile usage area** - whether in production, warehouse or logistical areas
- ✓ **Customized** lengths available to perfectly **suit your needs**



moderate impact  
absorption



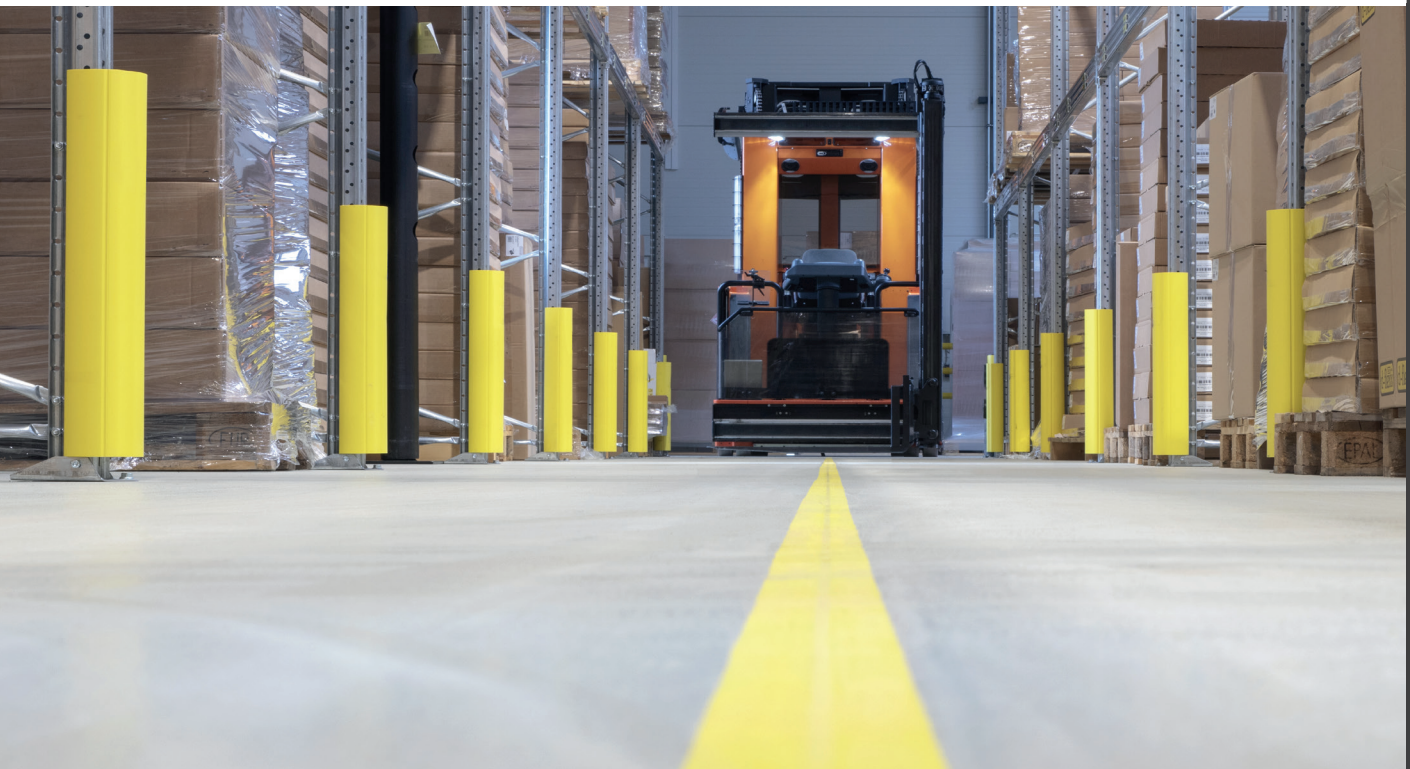
„ALFA“



The flexible d-flexx rack protection „Alfa“ is an innovative protection for shelves. The simple assembly without additional tools allows a quick application and easy handling .

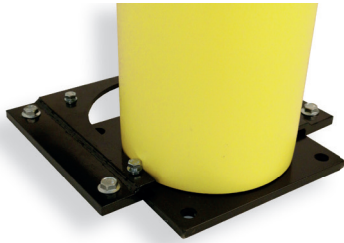
The rack guard is clicked directly onto the shelf to be protected. Due to the not necessary ground fastening, the ground is protected in case of a collision.

The d-flexx rack protection „Alfa“ is available in three different heights.

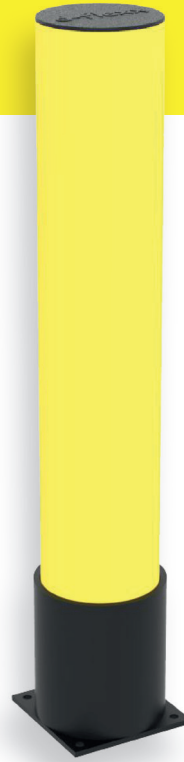


RACK GUARD „ALFA“

high impact  
absorption



**SLIDER PLATE**



**„BRAVO“**

The flexible d-flexx bollards „Bravo“ absorb the impact energy. The processed special material does not damage the bollard and the vehicle.

Due to its robustness and high visibility the bollard is ideal to be installed on parkings, entrances and for separation of pedestrian areas.

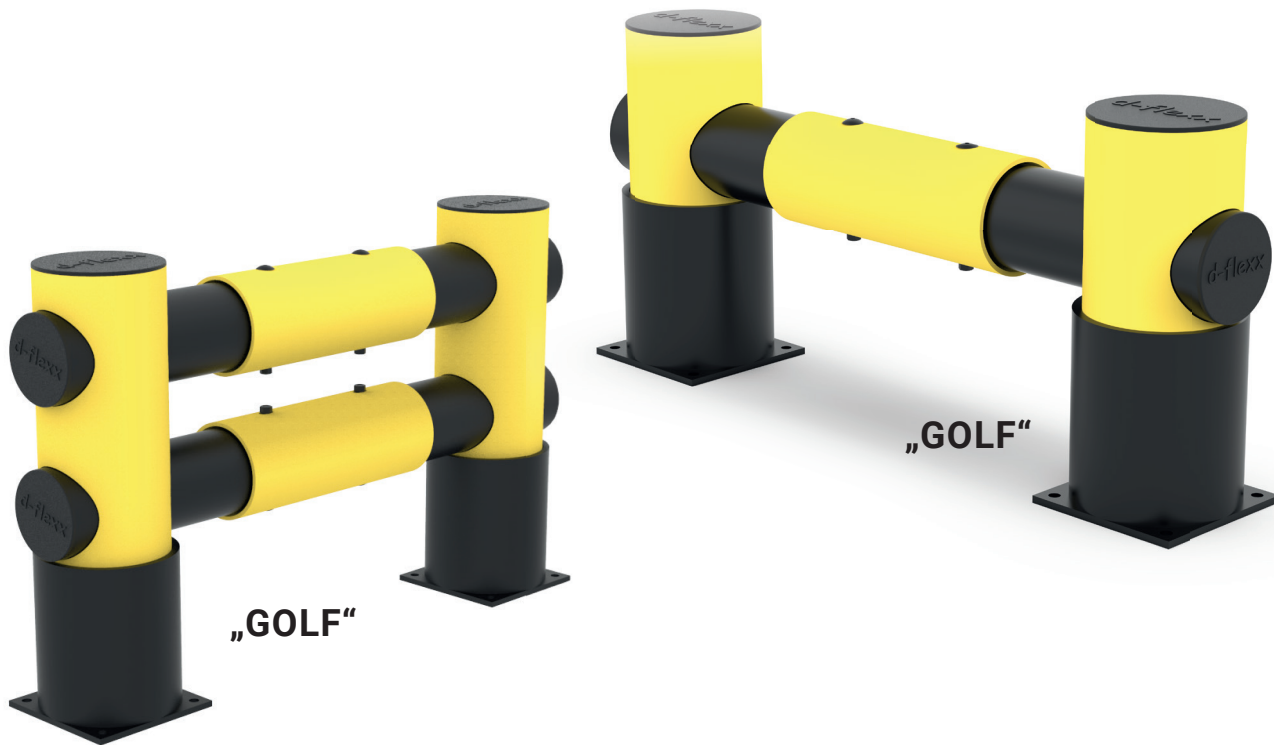
The d-flexx bollards „Bravo“ are available in a diameter of 200 mm and height of 516 mm | 760 mm | 1200 mm

The fixing material is always included in the delivery.

**FLEXIBLE BOLLARD „BRAVO“**



extreme impact  
absorption



The flexible d-flexx rack end barriers „Golf“ protect the rack ends in outdoor and indoor use. Once installed, the rack end is not in direct contact with the rack to be protected. This allows the rack end protection to absorb the impact energy.

Cost and time consuming maintenance work will be reduced to the minimum. The moveable cuffs additionally absorb the impact energy. The double rack end is for driveways with heavy pallet trucks.

The fixing material is always included in the delivery.

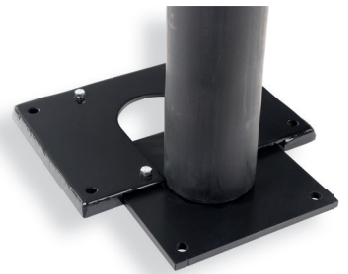


RACK END PROTECTION „GOLF“

high impact  
absorption



„DELTA“

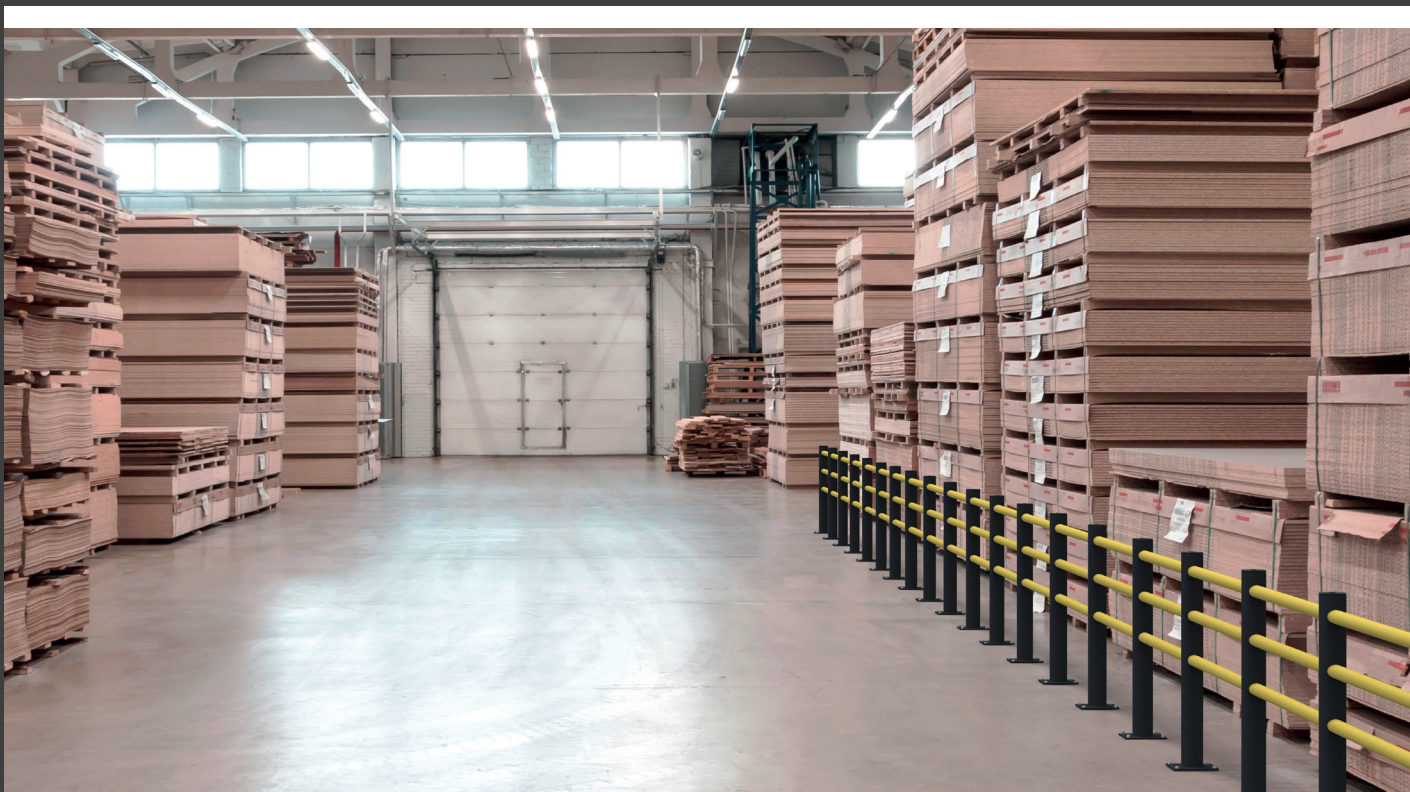


**SLIDER PLATE**

The flexible d-flexx safety barrier „Delta“ is an innovative and economic separation of pedestrian areas and trails. Due to the modular system a customized solution can always be supplied by means of individual cuttings.

The fixing material is always included in the delivery.

*Compatible with our swing door „Juliet“ (page 10 / 11).*

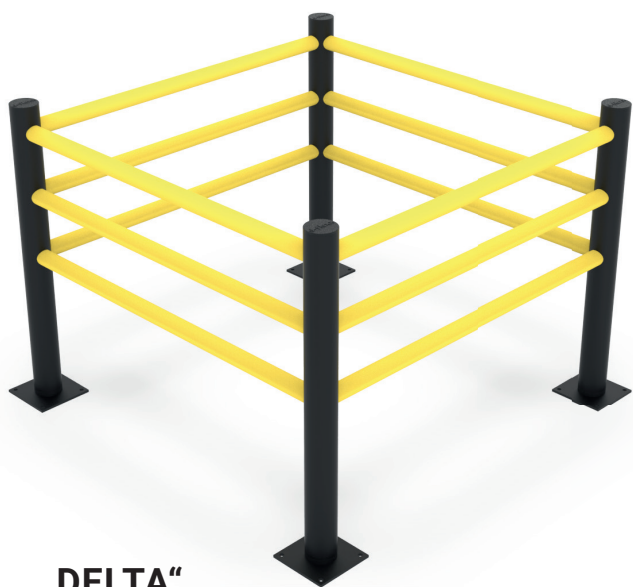


Additionally to the „Delta“ safety barrier we now offer you two variants of the „Delta“ barrier with four beams in height 1200 mm and 1600 mm.

The „Delta“ barrier in 1200 mm height with four beams offers a protection with a difference of only 329 mm to the ground for more protection.



„DELTA“

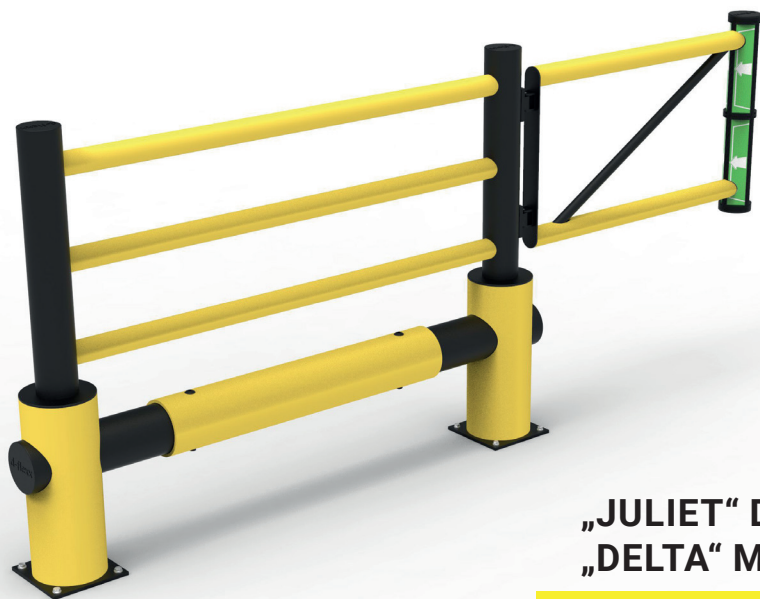


„DELTA“

COLUMN PROTECTOR HEIGHT  
1200 mm „DELTA“







„JULIET“ DOOR + „DELTA“ MIDDLE POST

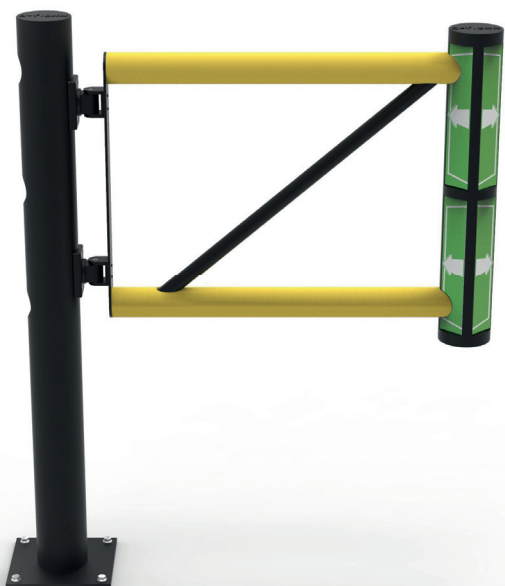


The swing door „Juliet“ can be integrated in our „Delta“ or „Echo“ system. It can be installed also alone with a „Delta“ or „Echo“ post.

The fixing material is always included in the delivery.

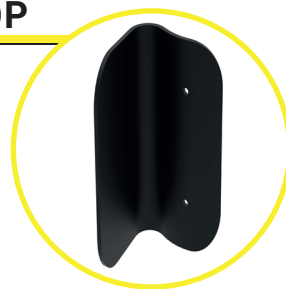
**Our swing door „Juliet“ is available with a wheel from a length of 1500 mm.**



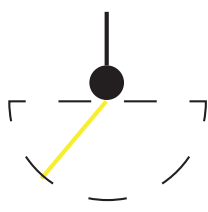


„JULIET“ DOOR +  
„DELTA“ MIDDLE POST

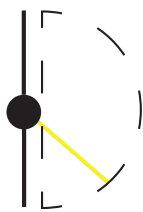
**GATE-STOP**



**USE OF  
HYDRAULIC HINGES**



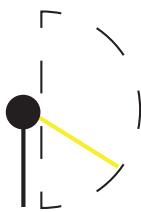
Middle post



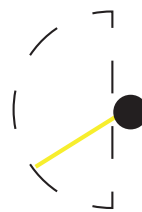
T-Post 90°



Corner post 90° left



Corner post 90° right



End post



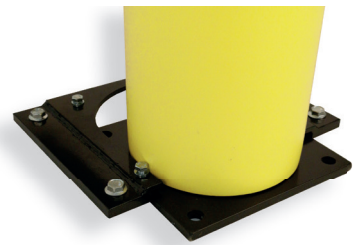
„JULIET“ DOOR +  
„ECHO“ END POST

**BOLLARD**





„ECHO“



**SLIDER PLATE**

TRAFFIC BARRIER PLUS „ECHO“ MODULAR

The flexible d-flex traffic barrier PLUS „Echo“ is a combination of the d-flex modules „Charlie“ and „Delta“.

Due to the additional heavy pipe in the lower part of the traffic barrier plus, pedestrian areas can be protected additionally.

The fixing material is always included in the delivery.

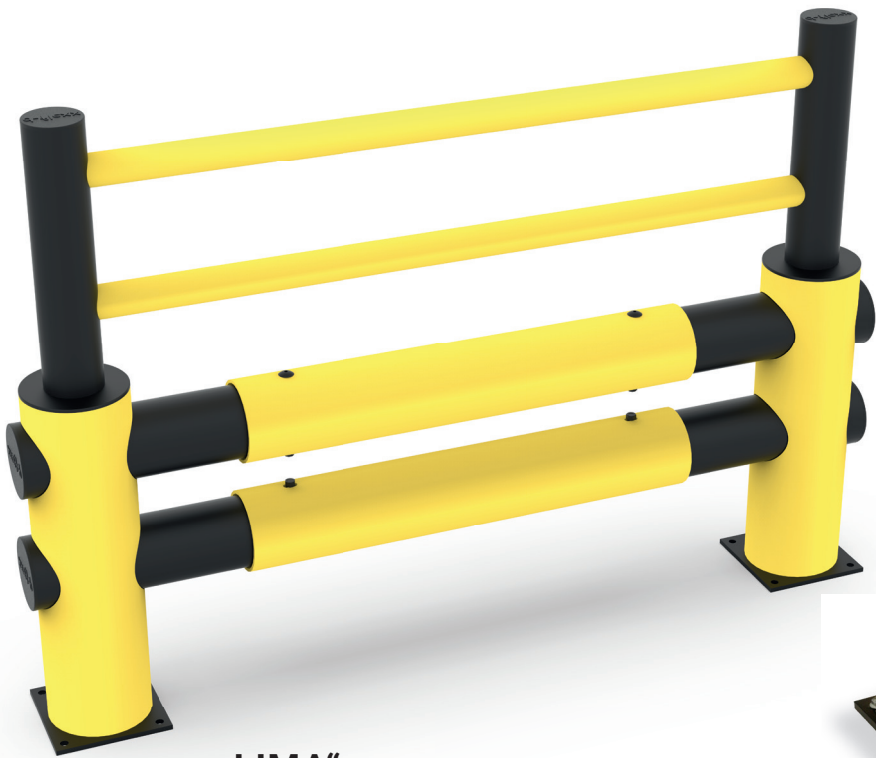
**Compatible with our swing door „Juliet“ (page 10 / 11).**



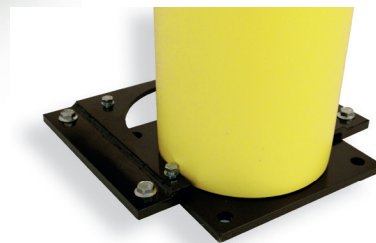


The flexible d-flex traffic barrier „Lima“ is a combination of the d-flex modules „Delta“ and „Hotel“. Due to the additional pipes in the lower part of the traffic barrier it can be used for heavy duty traffic.

The fixing material is always included in the delivery.

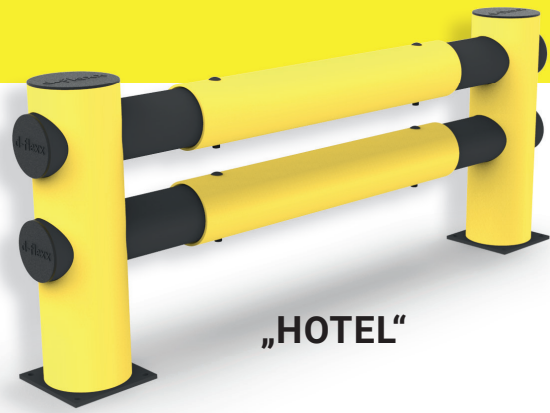


„LIMA“



**SLIDER PLATE**

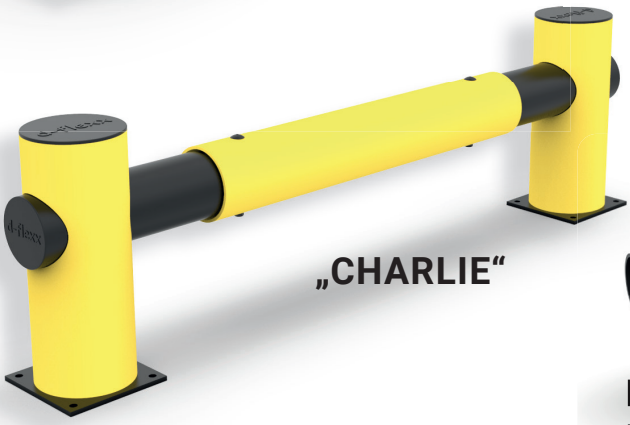




„HOTEL“



Photo:  
End post „Hotel“



„CHARLIE“

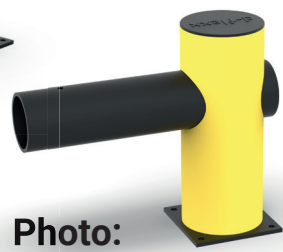
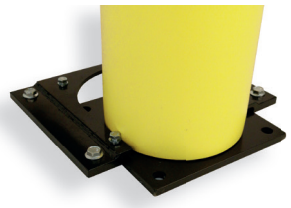


Photo:  
End post „Charlie“



**SLIDER PLATE**

The flexible d-flex traffic barrier „Charlie“ and „Hotel“ provide an optimal protection for machines, inventory and employees.

Thanks to the easy and fast assembly in combination with individually cutted lenghts, traffic routes can be separated quickly and easily from work areas or pedestrian paths. Bollards are a useful addition at the end of the traffic barriers.

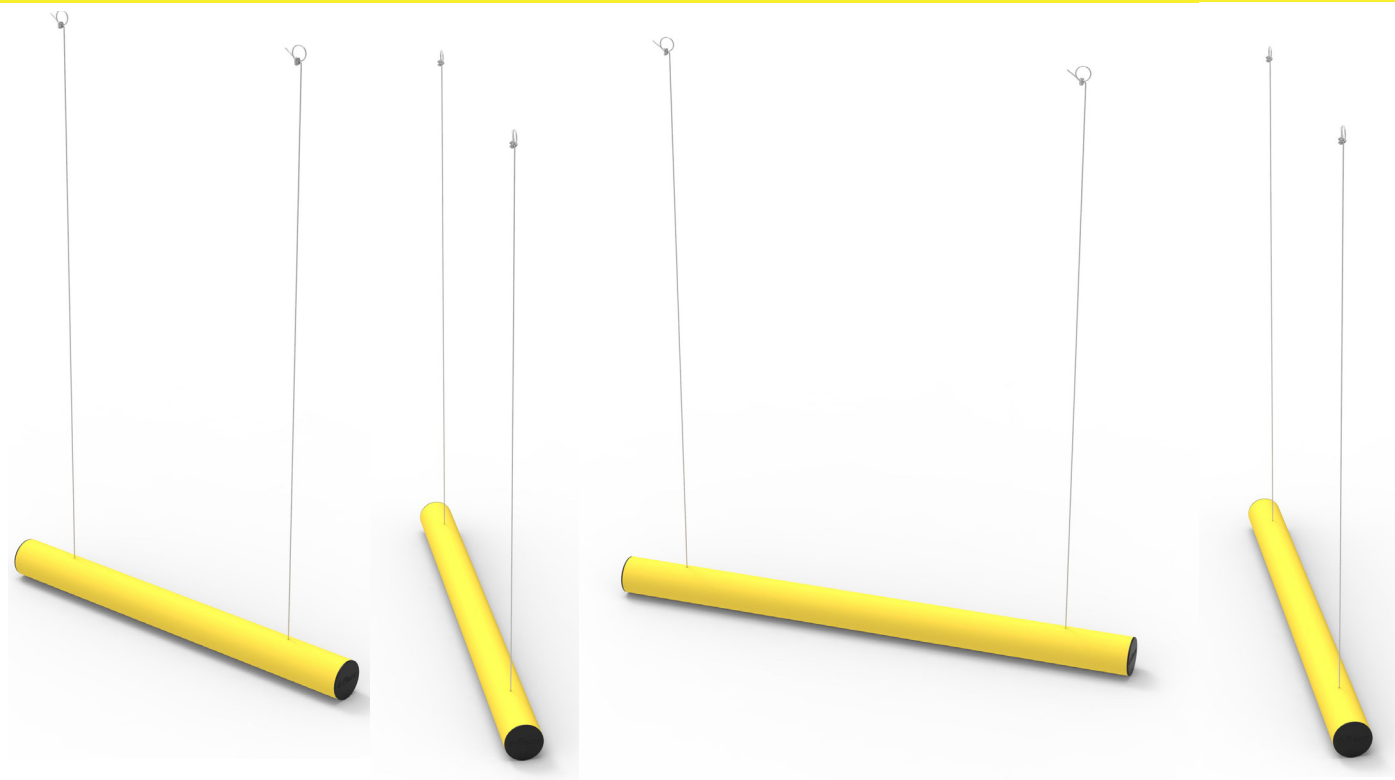
The fixing material is always included in the delivery.



„CHARLIE“

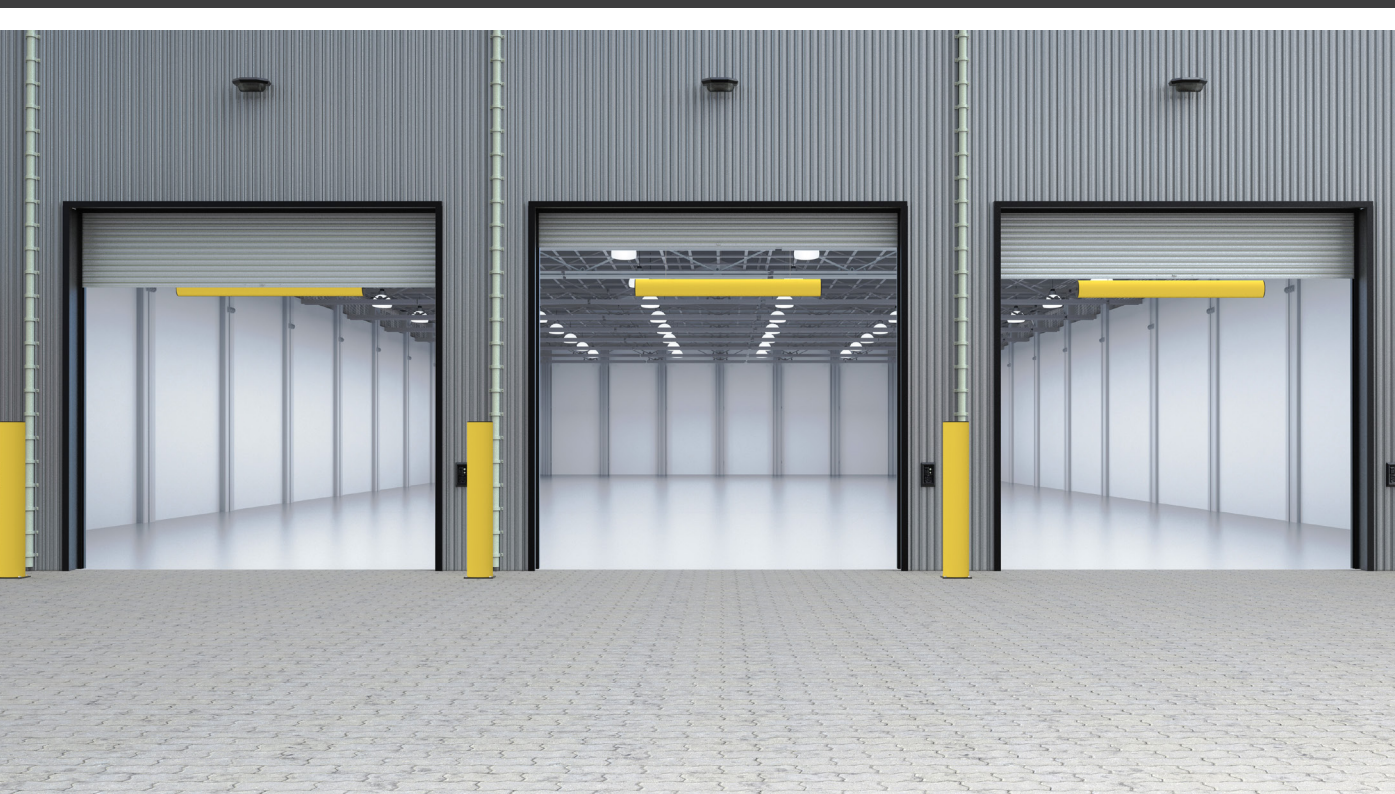


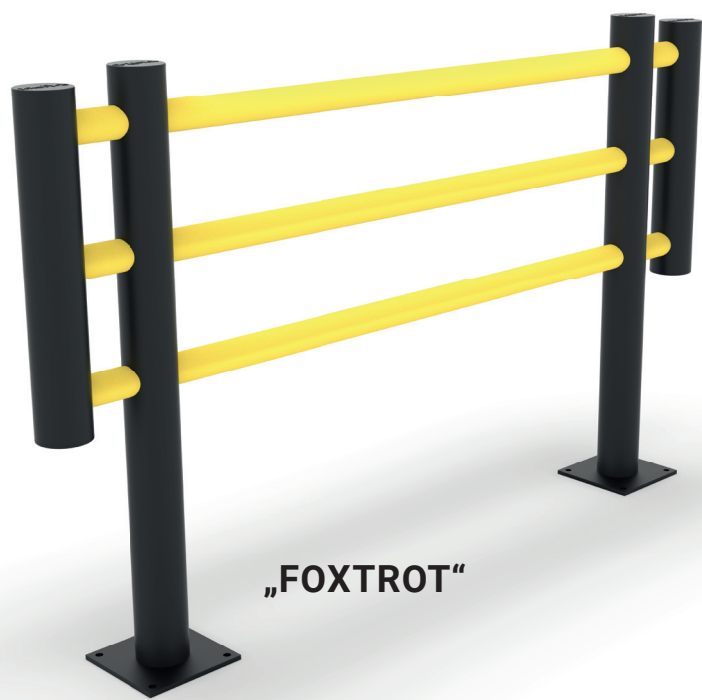
„HOTEL“



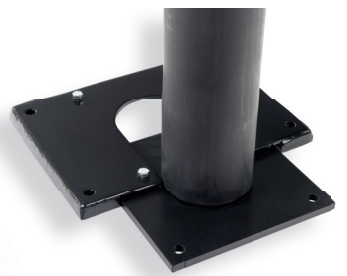
The flexible d-flexx height restriction „Papa“ is the optimal solution for marking driveways, gates and other areas with low clearance heights. The robust construction enables long-term use in industry and thus reduces maintenance costs. The eye-catching colouring ensures increased attention. The pre-assembled product is mounted using the suspension device included in the scope of delivery, which can be attached to the ceiling or other components.

The fixing material is always included in the delivery.





„FOXROT“

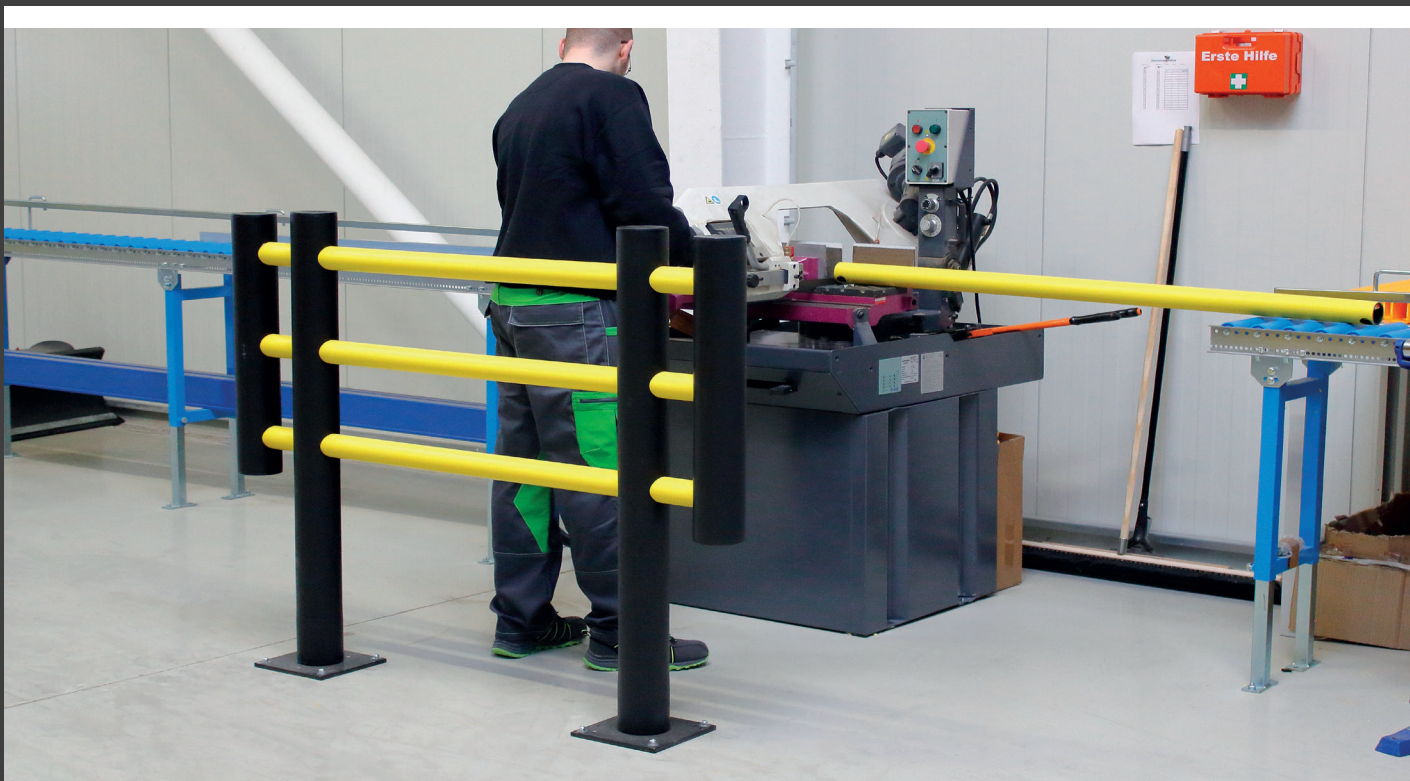


SLIDER PLATE

The flexible d-flexx machine protective fencing „Foxrot“ are the fast and easy way to separate working areas and routes from each other.

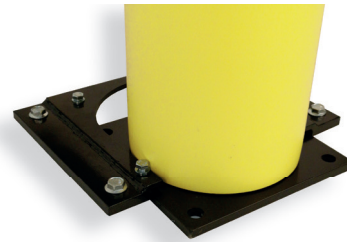
This product is delivered already pre-assembled and can be installed without further assembly activities. The outer sides are provided with an additional handrail to extend the protection area.

The fixing material is always included in the delivery.





„KILO“



SLIDER PLATE

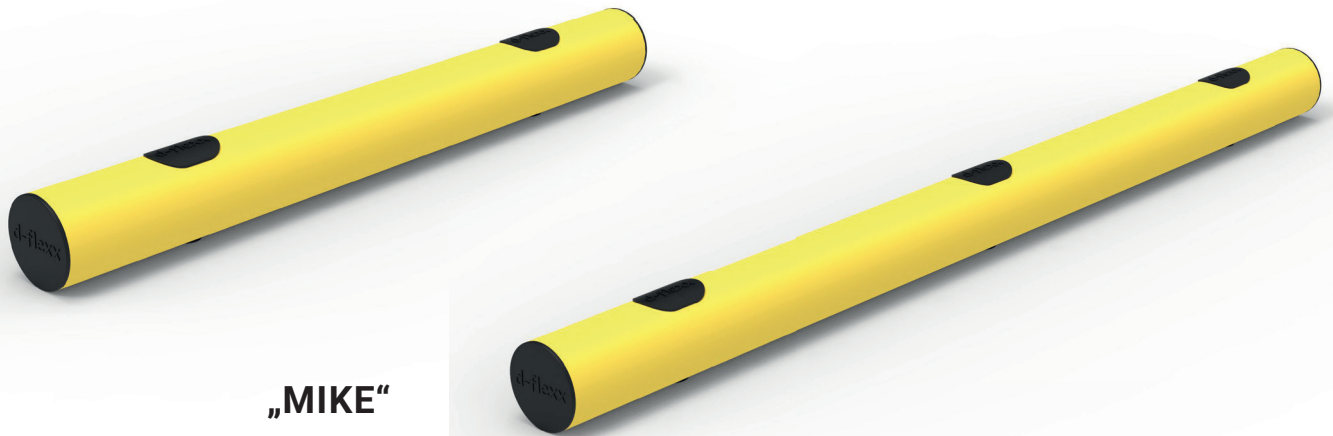
The flexible d-flexx machine protective fencing „Kilo“ separates quickly, working areas and traffic from each other.

This product is delivered already pre-assembled and can be installed without further assembly activities. The outer sides are provided with an additional handrail to extend the protection areas.

The fixing material is always included in the delivery.







„MIKE“

The flexible d-flexx kerb barrier “Mike” is the ideal product to protect walls and assembly lines from collisions in low ground areas.

The round shape allows the colliding forklift to bounce off the barrier, therefore absorbing the force. It functions as a guide throughout the installed area.

The kerb barrier “Mike” can be combined with most of our d-flexx collection for a full safety solution.

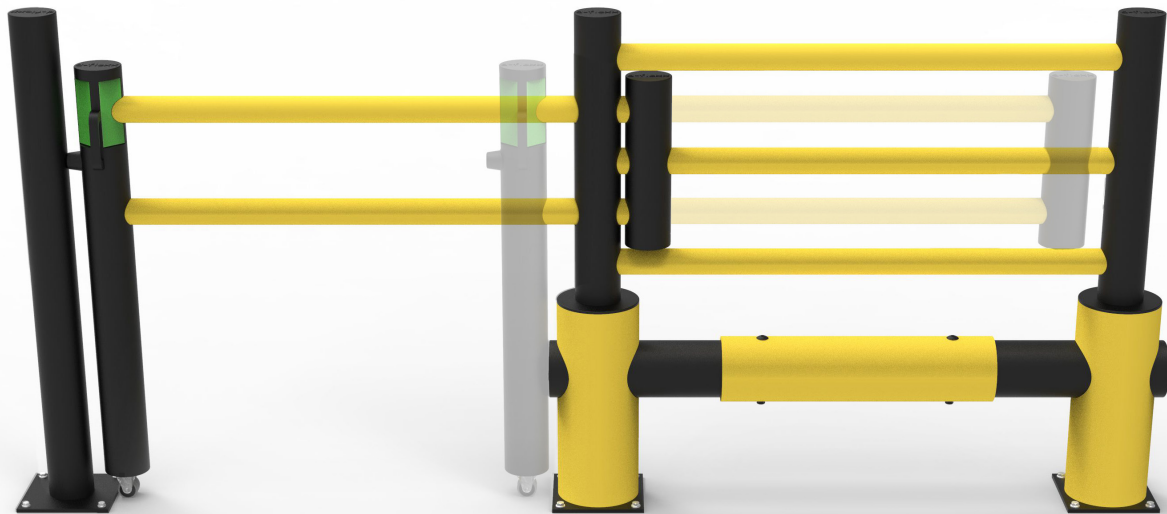
As our other products, it is made from polyethylene to absorb the impact force and return into its original shape. It is easy to install with just two screws and a cost-effective way to prevent low ground collisions.

The fixing material is always included in the delivery.

**The height of the kerb barrier is 140 mm.**

KERB BARRIER „MIKE“





„OSCAR“

The „Oscar“ slide gate is the ideal solution for areas in which a swing gate cannot be used. „Oscar“ is made of polyethylene and can be combined with our modular systems „Echo“ and „Delta“ (3 and 4 beams with a height of 1200 mm).

„Oscar“ can also be installed free-standing. The handles make „Oscar“ very easy to operate and ensure safe access to the storage areas.

The mounting material is included in the delivery.



SLIDE GATE „OSCAR“



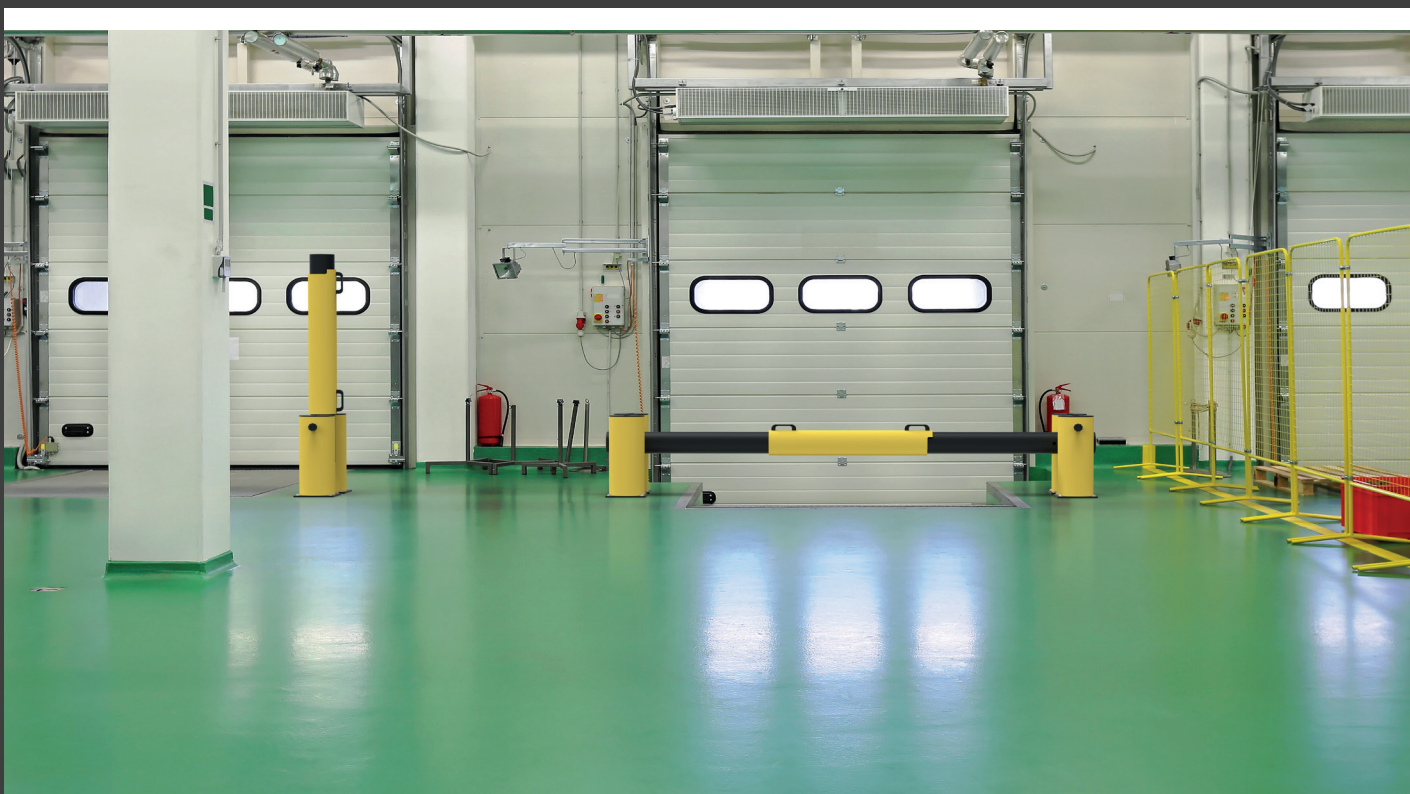
The flexible d-flexx „November“ Dock Gate is the perfect product for creating more security in loading areas.

In daily use the d-flexx Dock Gate convinces with its easy handling. It can be opened and closed by one person - simple and uncomplicated. The built-in safety spring also prevents the cross tube from lowering or falling abruptly, thus ensuring safe use. In combination with our other d-flexx products a complete barrier is created.

Like our other products „November“ is made of polyethylene to absorb the impact force and then return to its original shape.

The Dock Gate is pre-assembled and the mounting equipment is included in the delivery.

DOCK GATE „NOVEMBER“



# FLEXIBLE IMPACT PROTECTION – WHY?



## 1. Significant savings potential

Save money with d-flex. No replacement costs due to collision damage, no damage to the floor due to tearing, no repairs, no downtime.



## 2. Formable Polymer material

Our flexible impact protection d-flexx consists of a special polymer material. This material is deformable and absorbs the significant energy that is released in case of an impact. After a collision the protection is instantly reestablished!



## 3. High energy absorption

The products of the d-flex range absorb the impact forces due to its flexible polymer material. Hardly any energy is directed via the floor screwing. Due to this fact, flexible impact protection doesn't break out of the ground. Cost intensive floor repairs and downtime are prevented!



## 4. No damages on forklifts and pallet trucks

No more damages and scratches on your forklifts and pallet trucks - that's what you get with d-flex! Due to the deformable polymer material and the round forms, your vehicles won't get damaged in collisions any more and bumps get prevented effectively.



## 5. No Rust – No unwanted particles

Our flexible impact protection d-flexx consists of coloured-through polymer material. The products are not coated or lacquered. This means for you: Never again problems with rusty impact protection and unwanted particles!



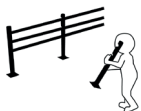
## 6. Chemical resistant and rustproof

In aggressive working environments, e.g. in the chemical- or food processing industry, with high demands on chemical and corrosion resistance of the installed impact protection, steel is the wrong choice. With its polymer material, d-flexx is extremely resistant and rustproof. The completely closed system prevents a contamination with unwanted particles and pests.



## 7. Highly visible – Effectively protected

Black and yellow coloured, it's highly visible, even from a distance. Present external visitors your perfectly protected machines, internal driveways and shelves and leave a good impression of your company.



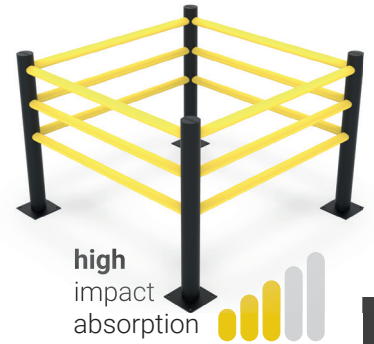
## 9. Highly modular – Well equipped for every challenge

d-flexx is modular and can be guided over any route, with the option of integrating angles and door sections, even customized lengths!

# PRODUCT OVERVIEW

endless size

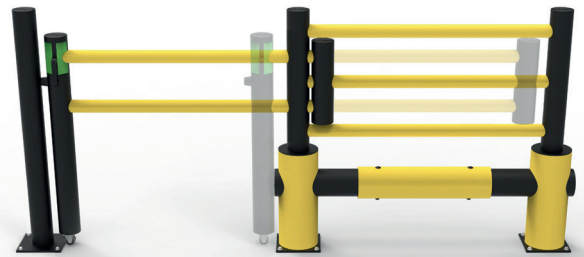
## DELTA + DELTA-C



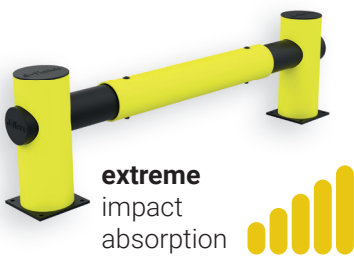
## JULIET



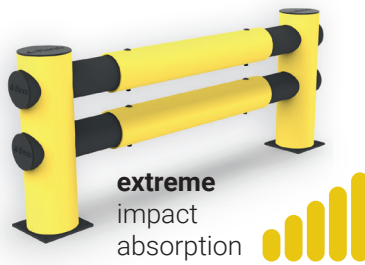
## OSCAR



## CHARLIE



## HOTEL



## ECHO PLUS



## LIMA

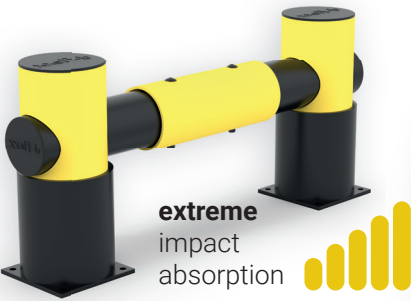


\*Impactangle 90°  
\*extreme impact absorption equals 10,000 Joules  
high impact absorption equals 2,500 Joules  
moderate impact absorption equals 400 Joules

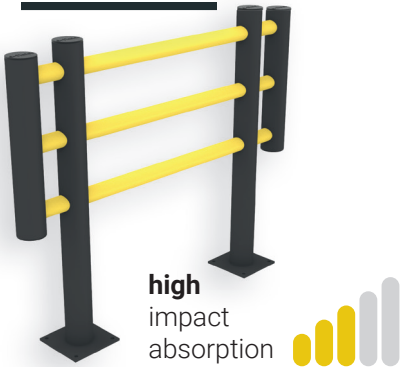
# PRODUCT OVERVIEW

fixed size

## GOLF



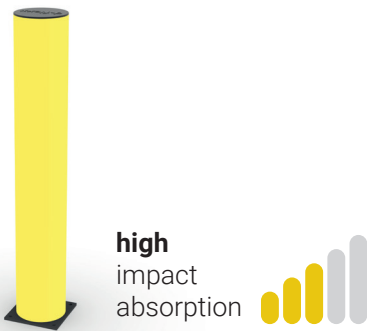
## FOXTROT



## KILO



## BRAVO



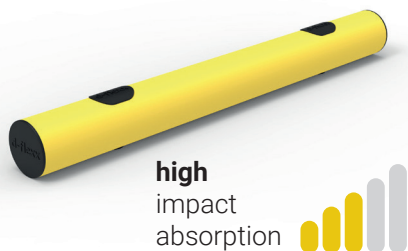
## ALFA



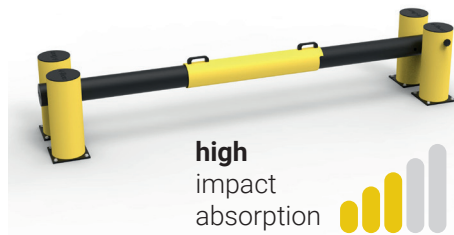
## PAPA



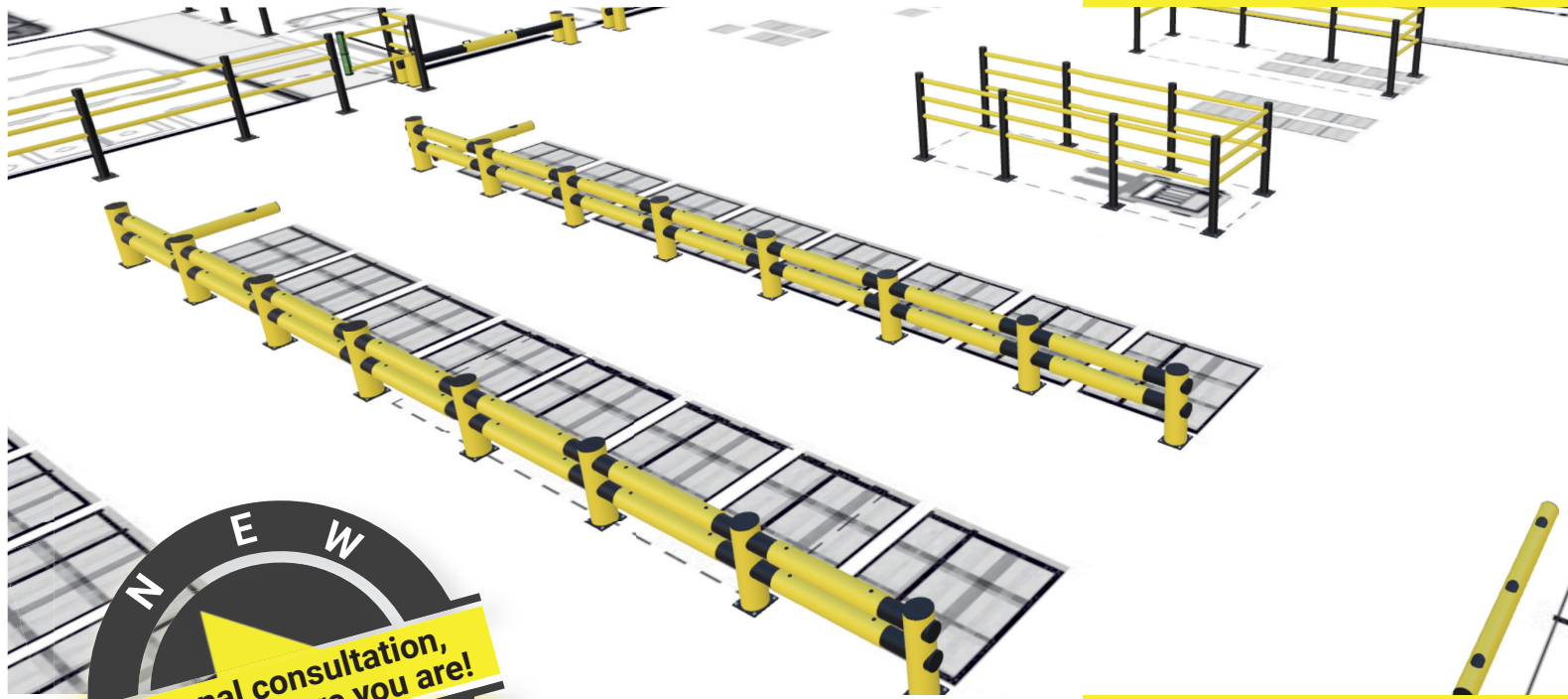
## MIKE



## NOVEMBER



\*Impact angle 90°  
\*extreme impact absorption equals 10,000 Joules  
high impact absorption equals 2,500 Joules  
moderate impact absorption equals 400 Joules



### **Global Offices**

d-flexx Europe GmbH  
d-flexx Sweden AB  
d-flexx Denmark Aps

| Germany  
| Sweden  
| Denmark

**For contact information for your specific region, please visit: [www.d-flexx.eu](http://www.d-flexx.eu)**

**We support you with your project!**